

Fig. 1 Isle Royale National Park and 2010 study sites, including regional context (inset)

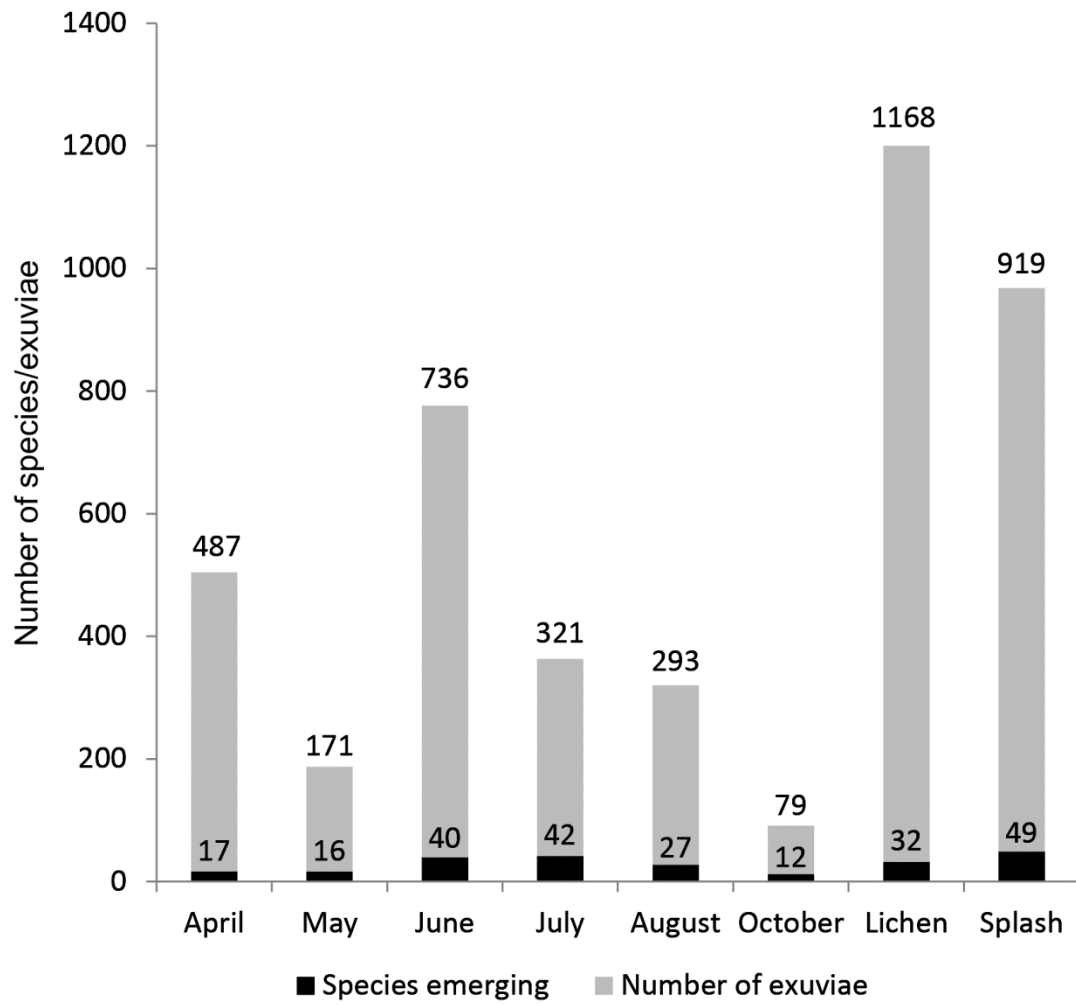


Fig. 2 Exuviae abundance (tall, light columns) and number of chironomid species (short, dark columns) emerging by season and zone from coastal rock pools, 2010

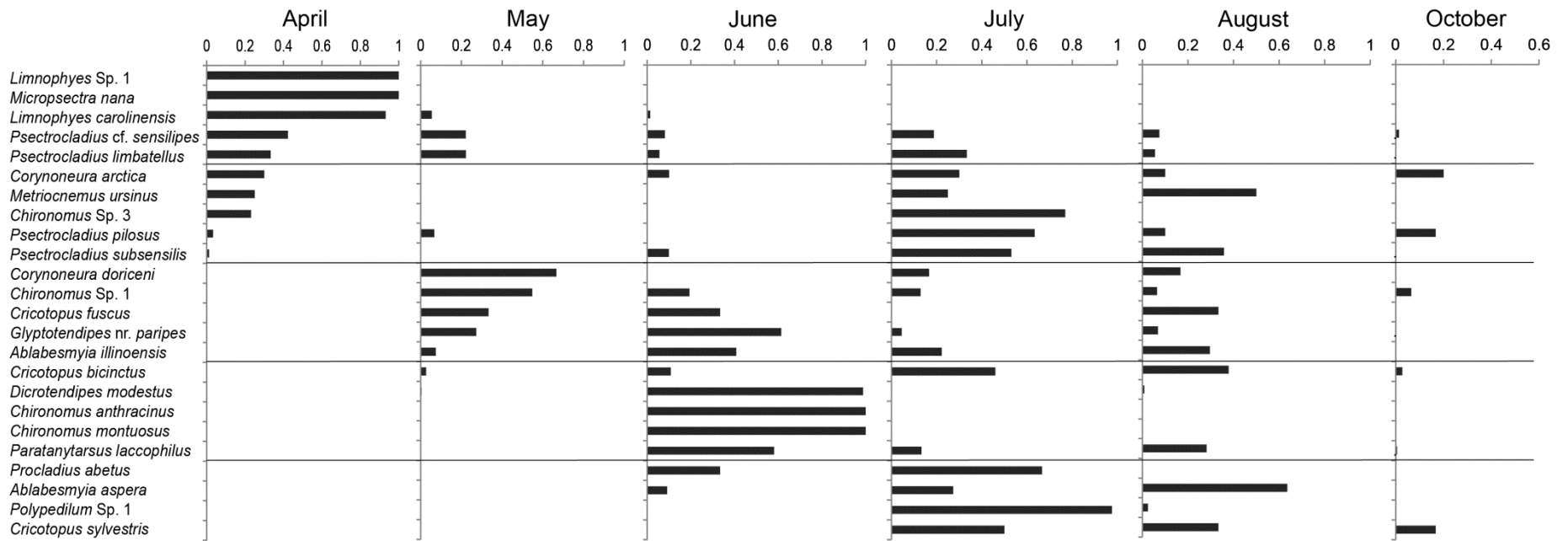


Fig. 3 Proportional abundance of monthly emergence by species used in beta diversity analyses, from lichen zone pools, Isle Royale, 2010

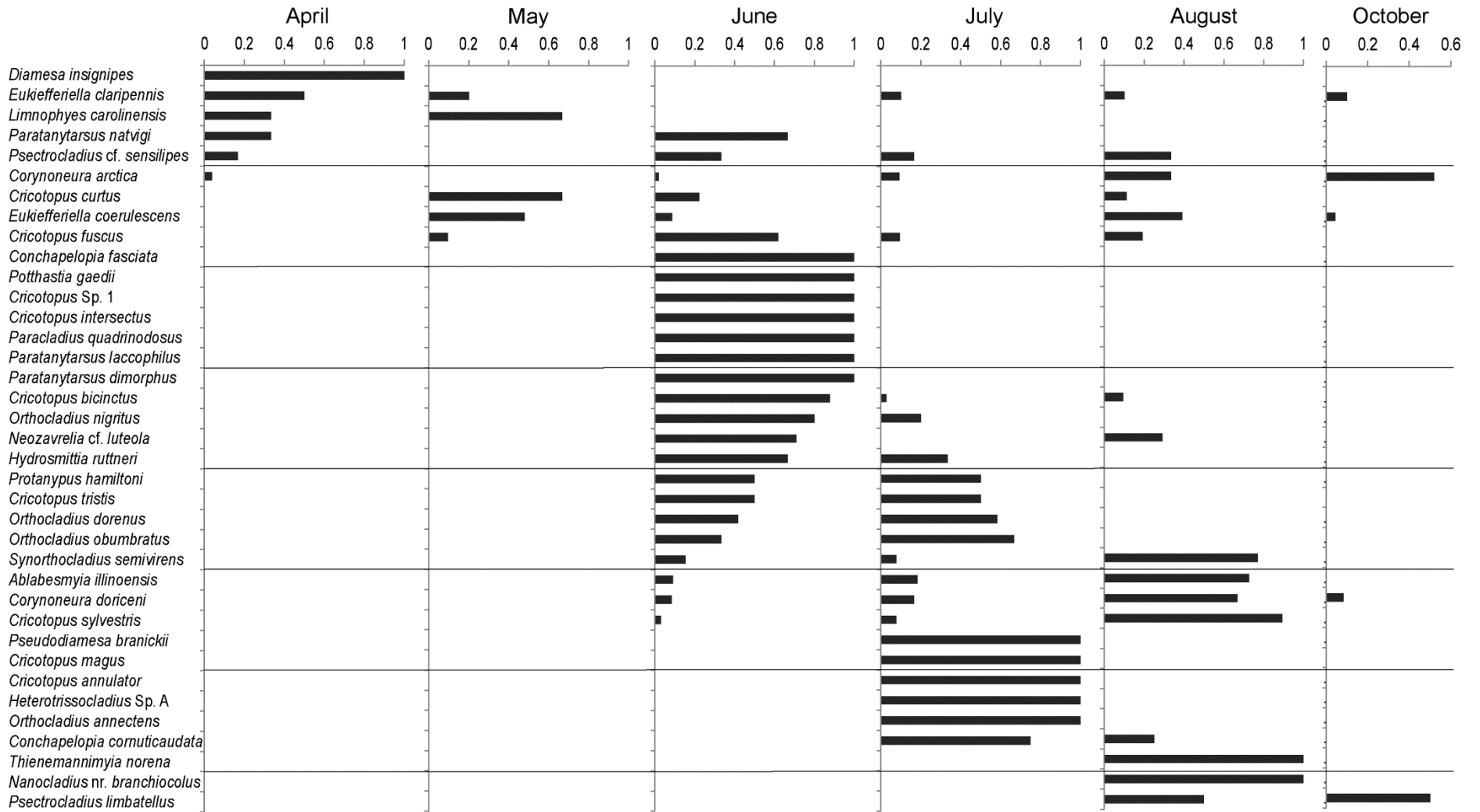


Fig. 4 Proportional abundance of monthly emergence by species used in beta diversity analyses, from splash zone pools, Isle Royale, 2010

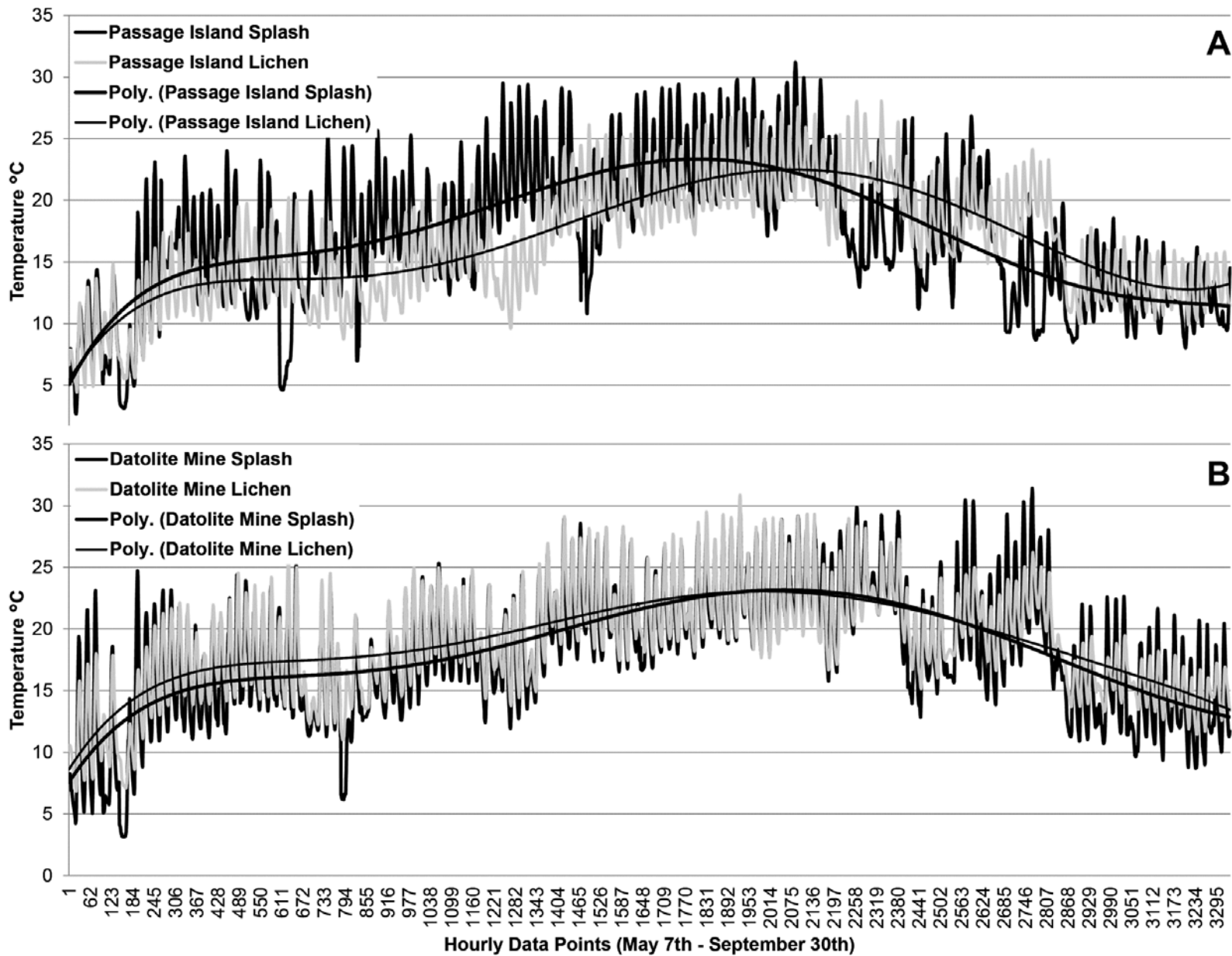


Fig. 5 Daily water temperature variation in splash (black line) and lichen (gray line) zone pools, with polynomial trend lines, at Passage Island (A) and Datolite Mine (B), Isle Royale, 2010

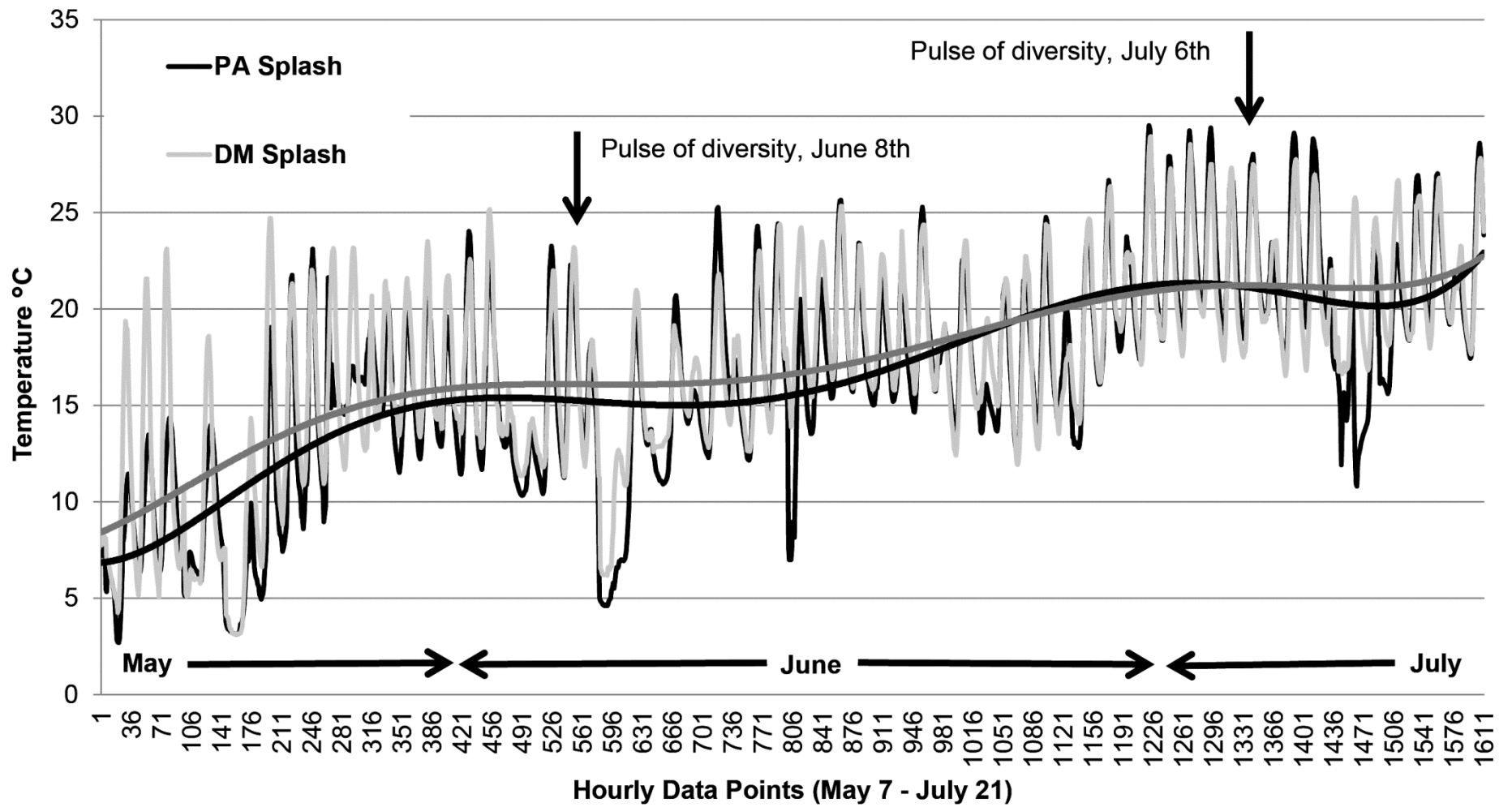


Fig. 6 Daily water temperature variation detail, and polynomial trend, in splash zone pools at Passage Island (dark lines) and Datolite Mine (gray lines), Isle Royale, 2010. Two sample dates with sharp increases of species accumulation from Raspberry Island (June 8th) and Blueberry Cove (July 6th) are noted (see text for site details)

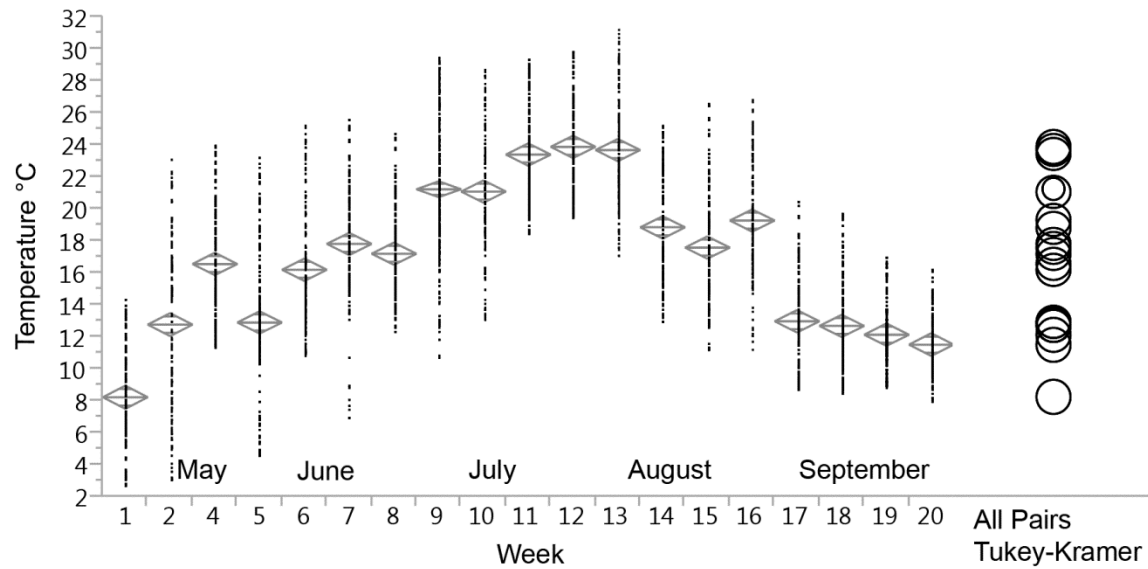


Fig. 7 Weekly water temperature means in a Passage Island splash pool, May 7 (week 1) to September 30 (week 20), 2010. Diamond center line is the mean, upper and lower points are 95% confidence intervals. Tukey-Kramer circles show significantly different means as non-intersecting or slightly intersecting circles, with nested circles not significantly different. Week 3 data were not logged by the thermistor

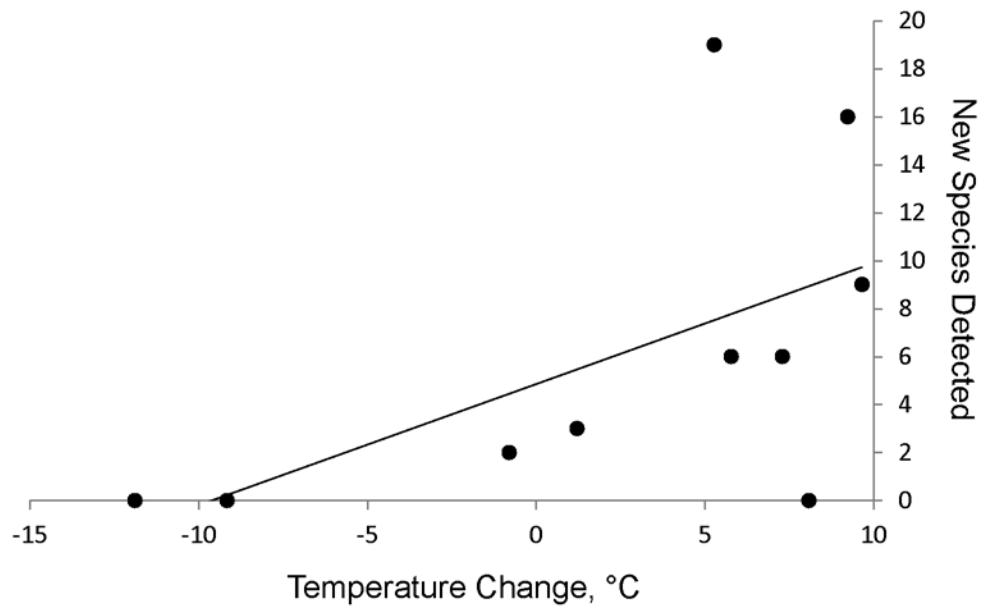


Fig. 8 Relationship between mean pool temperature change and new species detected in adjacent months